

#OTalk Transcript

Healthcare social media transcript of the #OTalk hashtag.

Tue, February 11th 2020, 8:00PM – Wed, February 12th 2020, 9:15PM (Europe/London).

See #OTalk Influencers/Analytics.



#OTalk @OTalk_

a day ago

#otalk will be starting shortly. So say hi and let us know you're here.



🇯🇲 **Sherlym** 🇬🇧 @sherlynmelody

a day ago

#Otalk hello folks, how are we doing tonight? Give us a wave if you are joining us tonight.



#HelloMyNamels Carolyn @CeeCeeOT

a day ago

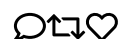
RT @OTalk_: #otalk will be starting shortly. So say hi and let us know you're here. <https://t.co/WpE3tKRWQD>



#HelloMyNamels Carolyn @CeeCeeOT

a day ago

@OTalk_ Hello, I'm here! #OTalk



#OTalk @OTalk_

a day ago

Please remember your code of conduct and ethics during tonight's #otalk and respect the views of others.



🇯🇲 **Sherlym** 🇬🇧 @sherlynmelody

a day ago

@CeeCeeOT @OTalk_ #otalk hey girl, whats good 😊



CatherineGreenlaw @c_greenlaw

a day ago

Hello, looking forward to the discussion #OTalk

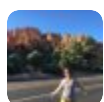




Rachel Booth ❤️ @OT_rach

a day ago

Mainly lurking tonight but I'm here. #otalk <https://t.co/nAxLtNbTIP>



Sarah Pender @louswaiting

a day ago

#OTalk hello 🙌



❤️🇯🇲 **Sherlyn** 🇬🇧❤️ @sherlynmelody

a day ago

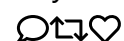
#OTalk, so this is my first time hosting, so please excuse any hiccups. First question for tonight, Question 1: What setting are you in and have you given a direct payment to any of your service users/carers?



#HelloMyNameIs Carolyn @CeeCeeOT

a day ago

@sherlynmelody @OTalk_ I'm armed with recent training and fresh understanding of #directpayments. Looking forward to #OTalk! How's you?



Bill Wong, OTD, OTR/L @BillWongOT

a day ago

hello peeps! #OTalk <https://t.co/yJ8gFrfbOZ>



#OTalk @OTalk_

a day ago

Its @GillyGorry on the account for support tonight. Let me know if you need anything. Please try to remember the hash tag #otalk in every tweet so we can all see. <https://t.co/aQTWUiln3b>



❤️🇯🇲 **Sherlyn** 🇬🇧❤️ @sherlynmelody

a day ago

@louswaiting #otalk, you made it, whoopee 😊



❤️🇯🇲 **Sherlyn** 🇬🇧❤️ @sherlynmelody

a day ago

@OTalk_ @GillyGorry #otalk hey thanks 😊



#OTalk @OTalk_

a day ago

Question 1) #otalk





Catherine McNulty @cathymc9781

a day ago

@OTalk_ @sherlynmelody Hello #OTalk will lurk, listen and learn, as I am not involved with direct payments at the moment



#OTalk @OTalk_

a day ago

RT @sherlynmelody: #Otalk hello folks, how are we doing tonight? Give us a wave if you are joining us tonight.



Fran @otfrancesca

a day ago

@sherlynmelody Hello! Great topic. I work for ASC in reablement service. I have recommended people look into direct payments but it still seems to be the SWs who do this. I need to educate myself more on this topic.
#otalk



#OTalk @OTalk_

a day ago

Always good to lurk a little #otalk



♥️🇯🇲 **Sherlynn** 🇬🇧♥️ @sherlynmelody

a day ago

@cathymc9781 @OTalk_ #otalk great to have you 😊



Bill Wong, OTD, OTR/L @BillWongOT

a day ago

@sherlynmelody I am in skilled nursing facilities in the USA. Very small % of patients are in there via private pay. After all, rates for a spot is already expensive! #otalk



♥️🇯🇲 **Sherlynn** 🇬🇧♥️ @sherlynmelody

a day ago

@otfrancesca #otalk thats interesting @louswaiting do any of your OT's commission direct payments?



♥️🇯🇲 **Sherlynn** 🇬🇧♥️ @sherlynmelody

a day ago

@BillWongOT #otalk Hey Bill, yes services here too are also expensive!! Good to have you tonight.





Chloe Dickson @ChloeDicksonOT

a day ago

@sherlynmelody Hi, I'm a children and young people OT, we frequently get asked by parents about direct payments they can receive for their child. We would usually point them in the direction of money matters or SW #otalk



#OTalk @OTalk_

a day ago

RT @otfrancesca: @sherlynmelody Hello! Great topic. I work for ASC in reablement service. I have recommended people look into direct payment...



Nicky @OTNickyCMS

a day ago

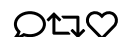
#OTalk



#HelloMyNameIs Carolyn @CeeCeeOT

a day ago

@sherlynmelody I'm in Adult Social Care and I've not yet given direct payment, but I shall be referring to our DP team now that I know more about it #OTalk



#OTalk @OTalk_

a day ago

RT @ChloeDicksonOT: @sherlynmelody Hi, I'm a children and young people OT, we frequently get asked by parents about direct payments they ca...



Janet @janetregan3

a day ago

@OTalk_ #OTalk sorry!!



#OTalk @OTalk_

a day ago

RT @CeeCeeOT: @sherlynmelody I'm in Adult Social Care and I've not yet given direct payment, but I shall be referring to our DP team now th...



Bill Wong, OTD, OTR/L @BillWongOT

a day ago

@sherlynmelody I heard nursing homes in my neck of the woods cost up to about \$5000 USD a month. This can add up if you are a long term resident at these things. #otalk





♥🇯🇲 Sherlynn 🇬🇧♥ @sherlynnmelody

a day ago

@janetregan3 @OTalk_ #otalk thats good to know. Maybe there will be some questions here for you to answer.



Rachel Chilvers @RChilversOT

a day ago

@CeeCeeOT @sherlynnmelody And my first time joining in to #otalk, @sherlynnmelody! I have occasionally used DPs for equipment in adult social care



Sarah Pender @louswaiting

a day ago

@sherlynnmelody @otfrancesca #OTalk we do recommend items for people to purchase and if they are unable to purchase these we would consider a direct payment



Catherine Greenlaw @c_greenlaw

a day ago

@sherlynnmelody @otfrancesca @louswaiting I see Direct Payments as a great bit of kit in our OT tool box to enable meaningful occupations #OTalk



Hayley OT @hayleyot1

a day ago

@sherlynnmelody @OTalk_ I work in forensic mental health inpatient services. We've recently learn more about supporting service users with what they can access personalised budgets for around discharge (not necessarily always direct payments) #oTalk



♥🇯🇲 Sherlynn 🇬🇧♥ @sherlynnmelody

a day ago

Thanks so far ill be moving onto my next question #Otalk Question 2: In general, what are your services users/carers using the direct payments for?



#HelloMyNameIs Carolyn @CeeCeeOT

a day ago

@louswaiting @sherlynnmelody @otfrancesca Where I work, direct payments are mainly used for care packages or similar #OTalk



#OTalk @OTalk_

a day ago

Agree #otalk any examples of how they've been used?





#OTalk @OTalk_

a day ago

RT @hayleyot1: @sherlynmelody @OTalk_ I work in forensic mental health inpatient services. We've recently learn more about supporting serv...



#HelloMyNamels Carolyn @CeeCeeOT

a day ago

@sherlynmelody Mostly care packages or similar to support the individual's care needs #OTalk



Bill Wong, OTD, OTR/L @BillWongOT

a day ago

@sherlynmelody Since I am in the nursing home setting, so it goes to quite a bit of folks- rehab (if patients are on it), nursing, as well as administrative costs. #otalk



#OTalk @OTalk_

a day ago

Question 2) #otalk



#HelloMyNamels Carolyn @CeeCeeOT

a day ago

RT @sherlynmelody: Thanks so far ill be moving onto my next question #OTalk Question 2: In general, what are your services users/carers usi...



#OTalk @OTalk_

a day ago

RT @CeeCeeOT: @sherlynmelody Mostly care packages or similar to support the individual's care needs #OTalk



Chloe Dickson @ChloeDicksonOT

a day ago

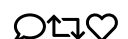
@sherlynmelody Parents would use payments to aid towards equipment, care for the child or ability to complete meaningful occupations with any support required. #otalk



♥🇯🇲 **Sherlym** 🇬🇧♥ @sherlynmelody

a day ago

@BillWongOT #otalk so are you saying that you local government offices (I don't know how you refer to them in USA) would provide money/direct payment for them to engage in meaningful activities - in or out of the nursing home?





Fran @otfrancesca

a day ago

@CeeCeeOT @louswaiting @sherlynmelody Same here. I don't really hear of it being used in other ways in my workplace and this is why I wanted to join in tonight to educate myself and start up discussions with my colleagues and get better at seeing this as a tool in my kit #otalk



Bill Wong, OTD, OTR/L @BillWongOT

a day ago

If it were from a service user's perspective, I could have conceivably pay for the cost of private practice OT if I still needed OT but my insurance doesn't provide good coverage. #OTalk



Bill Wong, OTD, OTR/L @BillWongOT

a day ago

@sherlynmelody in my setting- private pay means that these patients and/or their families would pay the costs out of their pockets. #otalk



Chloe Dickson @ChloeDicksonOT

a day ago

@BillWongOT @sherlynmelody Does the local government provide direct payments to assist with the living costs in the home? #otalk



Amanda White @ajciliaOT

a day ago

@sherlynmelody Q1.#otalk I currently work in acute hospital. I have only related to direct payments when I worked in community learning disabilities team. But the applications were driven by SW



Bill Wong, OTD, OTR/L @BillWongOT

a day ago

@ChloeDicksonOT @sherlynmelody if patients are on insurance (public or private), that will assist them costwise living in these nursing homes. #otalk



Susan Griffiths @SusanGriffiths5

a day ago

@sherlynmelody To be honest I know very little about it. What is the eligibility/criteria for DP? There are some equipment i.e. sensory equipment that are not provided by the NHS so would love to hear if DP can be used for this #OTalk



♥️ **JM Sherlym GB** ♥️ @sherlynmelody

a day ago

@otfrancesca @CeeCeeOT @louswaiting #otalk Yes Fran, thats part of the reason I have chosen this topic so we can all share how DP's are being used. hopefully we will get more responses 😊



#OTalk @OTalk_

a day ago

Interesting. Anyone can apply for a care assessment by their local authorities and if funded services are needed I believe a direct payment can be requested. #otalk



♥ JM Sherlym GB ♥ @sherlynmelody

a day ago

#OTalk time is flying, Question 3: Have you used any external organisations to support with the utilisation of direct payments? And what support did they provide?



#OTalk @OTalk_

a day ago

#otalk



Amanda White @ajciliaOT

a day ago

@sherlynmelody Q2.#otalk most of the people who I knew used the direct payment to pay for care, personal or social inclusion.



♥ JM Sherlym GB ♥ @sherlynmelody

a day ago

@ChloeDicksonOT @BillWongOT #otalk what do you mean by living costs? bills etc?? @longhurst_vicki do people usually use DP's for livings costs?



#OTalk @OTalk_

a day ago

RT @ajciliaOT: @sherlynmelody Q2.#otalk most of the people who I knew used the direct payment to pay for care, personal or social inclusion.



Amanda White @ajciliaOT

a day ago

RT @OTalk_: Interesting. Anyone can apply for a care assessment by their local authorities and if funded services are needed I believe a di...



#OTalk @OTalk_

a day ago

Question 3) #otalk



Bill Wong, OTD, OTR/L @BillWongOT

a day ago

@sherlynmelody if you are talking about nursing home settings that I work at, that will be no. It's not in rehab's purview. I think social workers and/or business offices will take care of that. #otalk



♥ JM Sherlym GB ♥ @sherlynmelody

a day ago

@OTalk_ #OTALK @ChloeDicksonOT



denise mucaj @DeniseMucaj

a day ago

Hi my name is Denise, I work in ACS, I am familiar with Direct payments and have issued a few in order to provide specialist equipment to ppl with mainly physical disabilities. it's my first time on here and learning how it all works. #OTalk



#OTalk @OTalk_

a day ago

RT @sherlynmelody: #Otalk time is flying, Question 3: Have you used any external organisations to support with the utilisation of direct p...



OTEmmaS @emmaspellmanOT

a day ago

@sherlynmelody Hi @sherlynmelody and #otalk just lurking & learning tonight as I'm in academia, will apply any learning to teaching sessions. Interested if any participants work in GP practices in any occupational therapy vocational clinics lead by @theRCOT from Nov 18



#OTalk @OTalk_

a day ago

@BillWongOT @sherlynmelody As USA don't have DP some of the examples might not fit. DP is give funded Care payment bases on needs and income. #otalk



#OTalk @OTalk_

a day ago

RT @DeniseMucaj: Hi my name is Denise, I work in ACS, I am familiar with Direct payments and have issued a few in order to provide speciali...



#OTalk @OTalk_

a day ago

@DeniseMucaj Welcome the #otalk community are a friendly bunch, do ask if you need anything



Hayley OT @hayleyot1

a day ago

@sherlynmelody I know that within our trust personalised budgets have been used for anything from spa days to laptops to car insurance to 1:1 music lessons, as well as your usual carers/support workers. Anything that could support someone to stay well! #otalk



♥️ **JM Sherlym GB** ♥️ @sherlynmelody

a day ago

@OTalk_ #otalk so would you supply a PA/agency/signpost to certain service that the person may benefit from?



#OTalk @OTalk_

a day ago

RT @emmaspellmanOT: @sherlynmelody Hi @sherlynmelody and #otalk just lurking & learning tonight as I'm in academia, will apply any learning...



OTEmmaS @emmaspellmanOT

a day ago

RT @OTalk_: Interesting. Anyone can apply for a care assessment by their local authorities and if funded services are needed I believe a di...



♥️ **JM Sherlym GB** ♥️ @sherlynmelody

a day ago

@DeniseMucaj #otalk Denise, soooo good to have you, thanks for the support. Welcome



Chloe Dickson @ChloeDicksonOT

a day ago

@sherlynmelody #otalk in our service we are about to work with a service called social security scotland who work with patients and their families to ensure they are receiving the correct funds they are entitled too.



#OTalk @OTalk_

a day ago

RT @hayleyot1: @sherlynmelody I know that within our trust personalised budgets have been used for anything from spa days to laptops to car...



OTEmmaS @emmaspellmanOT

a day ago

RT @otfrancesca: @sherlynmelody Hello! Great topic. I work for ASC in reablement service. I have recommended people look into direct payment...



OTEmmaS @emmaspellmanOT

a day ago

RT @DeniseMucaj: Hi my name is Denise, I work in ACS, I am familiar with Direct payments and have issued a few in order to provide speciali...



♥️ **JM Sherlym GB** ♥️ @sherlynmelody

a day ago

#otalk We are half way through tonight's talk, so here is Question 4: What, if any, have you found to be the disadvantages of a direct payment?



#HelloMyNameIs Carolyn @CeeCeeOT

a day ago

@DeniseMucaj Welcome Denise! #OTalk



#OTalk @OTalk_

a day ago

#otalk



♥️ **JM Sherlym GB** ♥️ @sherlynmelody

a day ago

RT @ChloeDicksonOT: @sherlynmelody #otalk in our service we are about to work with a service called social security scotland who work with...



Amanda White @ajciliaOT

a day ago

@sherlynmelody @OTalk_ Q3. #otalk I don't have any experience of this to share, but I think there were care agencies which could support using the DP as payment



#OTalk @OTalk_
Question 4 #otalk

a day ago



♥ **JM Sherlym GB** ♥ @sherlynmelody
@OTalk_ #Otalk, yes!! you are right.

a day ago



#OTalk @OTalk_
#otalk

a day ago



#OTalk @OTalk_
#otalk

a day ago



Janet @janetregan3
@sherlynmelody #OTalk I think DPs are great, but they do require a lot of time, effort, skills and resources to manage. This can mean that a fair few support hours get used up on support with managing the DP, which I am not sure is always accounted for when working out care packages.

a day ago



Nikki Helme @HelmeNikki
@sherlynmelody Lack of personal assistants that are suitable for supporting people, I've had several PA's but non of them are skilled or qualified. Maybe my standards are high but it is the biggest barrier to me #otalk

a day ago



#OTalk @OTalk_
This can be a problem. Especially when it comes to regulating the care #otalk

a day ago



♥ **JM Sherlym GB** ♥ @sherlynmelody
#otalk

a day ago



#OTalk @OTalk_
RT @janetregan3: @sherlynmelody #OTalk I think DPs are great, but they do require a lot of time, effort, skills and resources to manage. Th...

a day ago



Bill Wong, OTD, OTR/L @BillWongOT
@sherlynmelody In terms of nursing homes in the USA, actually it's one of the least favorite avenues of payment from a profit margin standpoint... if there is a rehab company contracted to run rehab vs. in-house. #otalk

a day ago



#HelloMyNameIs Carolyn @CeeCeeOT

a day ago

RT @HelmeNikki: @sherlynmelody Lack of personal assistants that are suitable for supporting people, I've had several PA's but non of them a...



♥️ **JM Sherlym GB** ♥️ @sherlynmelody

a day ago

#otalk Moving on then to... Question 5: What have you found to be the advantages of a direct payment?



♥️ **JM Sherlym GB** ♥️ @sherlynmelody

a day ago

#otalk @lauraharold13 this is interesting, something to raise in team meeting??



#OTalk @OTalk_

a day ago

Question 5) #otalk



Sarah Pender @louswaiting

a day ago

#OTalk what would happen if you had a PA that took on several service users with their DPs , would that then be a unregulated care agency?



#OTalk @OTalk_

a day ago

@sherlynmelody Less rigid care packages. Less living by the times your care agency provides, more choice in how to achieve your goals #otalk



OTEmmaS @emmaspellmanOT

a day ago

@sherlynmelody if training is lacking for personal assistants and also facilitating understanding & using DP for those using them - might that be a further driver for occupational therapy involvement #otalk



♥️ **JM Sherlym GB** ♥️ @sherlynmelody

a day ago

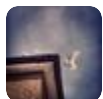
@louswaiting #otalk good question, @c__greenlaw is that right? would it be?



#OTalk @OTalk_

a day ago

RT @emmaspellmanOT: @sherlynmelody if training is lacking for personal assistants and also facilitating understanding & using DP for those...



Fran @otfrancesca

a day ago

@sherlynmelody I had a case where the hospital SW was pushing for placement on account of his needs/cost of having care through CMB. A PA has enabled him to remain living at home with adequate amount of care #otalk



♥️ JM Sherlym GB ♥️ @sherlynmelody

a day ago

#otalk we are in our last 15 minutes now. This is great guys, thanks so far



Amanda White @ajciliaOT

a day ago

@sherlynmelody Q5. #otalk employing the person you want to care for you. I did see some good examples but this was a few years ago



CatherineGreenlaw @c_greenlaw

a day ago

@louswaiting I would need to check with the CQC but I think there is a difference between working for an agency who co-ordinate the care worker and a PA with several individual contracts with different people
#OTalk



Amanda White @ajciliaOT

a day ago

@sherlynmelody Q5.#otalk can you use a DP to employ a family member ?



♥️ JM Sherlym GB ♥️ @sherlynmelody

a day ago

@otfrancesca #otalk what is CMB, please? :)



#OTalk @OTalk_

a day ago

RT @sherlynmelody: #otalk we are in our last 15 minutes now. This is great guys, thanks so far 😊



#OTalk @OTalk_

a day ago

RT @ajciliaOT: @sherlynmelody Q5. #otalk employing the person you want to care for you. I did see some good examples but this was a few years ago...



#HelloMyNameIs Carolyn @CeeCeeOT

a day ago

@otfrancesca @sherlynmelody That's a great outcome for him! #OTalk



#OTalk @OTalk_

a day ago

#otalk



♥️ JM Sherlym GB ♥️ @sherlynmelody

a day ago

@ajciliaOT #otalk I think you can, but I think there is a certain criteria to do this though!



#OTalk @OTalk_

a day ago

#otalk



♥️ JM Sherlym GB ♥️ @sherlynmelody

a day ago

#OTalk Question 6: What have you found to be the main barriers and or facilitators of using direct payments.



#OTalk @OTalk_

a day ago

RT @sherlynmelody: #OTalk Question 6: What have you found to be the main barriers and or facilitators of using direct payments.



Rachel Chilvers @RChilversOT

a day ago

@sherlynmelody Some service users are anxious about the responsibilities of being an employer When the DP is for equipment, if the service user no longer requires it, it cannot be re-used by the local authority as it would be if provided via the CES #otalk



Janet @janetregan3

a day ago

@OTalk_ @sherlynmelody Sorry, missed the #OTalk again! (trying to contribute while putting the kids to bed 🙄)



#OTalk @OTalk_

a day ago

@janetregan3 @sherlynmelody That's ok, even we miss the #otalk at times!



CatherineGreenlaw @c__greenlaw

a day ago

@RChilversOT @sherlynmelody I'm pleased to say Herts has just recruited a DP Manager to report to me so I will make sure there is a strong link with the occupational therapists #OTalk



#OTalk @OTalk_

a day ago

RT @c__greenlaw: @RChilversOT @sherlynmelody I'm pleased to say Herts has just recruited a DP Manager to report to me so I will make sure t...



#OTalk @OTalk_

a day ago

RT @RChilversOT: @sherlynmelody Some service users are anxious about the responsibilities of being an employer When the DP is for equipment...



#HelloMyNameIs Carolyn @CeeCeeOT

a day ago

Very much "Living life your way", at the heart of #occupationaltherapy IMO! #OTalk



♥️ JM Sherlym GB ♥️ @sherlynmelody

a day ago

@RChilversOT #otalk this is where @Leo this is where @LeonardCheshire come in handy, but it think there may be other external agents available to support with this issues. Good shout about equipment.



#OTalk @OTalk_

a day ago

RT @CeeCeeOT: Very much "Living life your way", at the heart of #occupationaltherapy IMO! #OTalk



YarnPaw @YarnPaw

a day ago

@sherlynmelody Hello, I'm new to #OTalk working in Adult Social Care, we can use direct payments for care and for options toward equipment costs where people have a preference for alternatives that we can provide at a lower cost.



#OTalk @OTalk_

a day ago

RT @sherlynmelody: @RChilversOT #otalk this is where @Leo this is where @LeonardCheshire come in handy, but it think there may be other ext...



♥ **JM Sherlym GB** ♥ @sherlynmelody

a day ago

@c_greenlaw @RChilversOT #otalk this is great @c_greenlaw I will share the transcript later :)



#OTalk @OTalk_

a day ago

RT @YarnPaw: @sherlynmelody Hello, I'm new to #OTalk working in Adult Social Care, we can use direct payments for care and for options towa...



#HelloMyNameIs Carolyn @CeeCeeOT

a day ago

@YarnPaw @sherlynmelody Welcome to #OTalk!



♥ **JM Sherlym GB** ♥ @sherlynmelody

a day ago

@RChilversOT @leo @LeonardCheshire #otalk no idea how my sentence went like that!



♥ **JM Sherlym GB** ♥ @sherlynmelody

a day ago

ahhhh nearly out of time.....#Otalk Question 7: Do you find direct payments are more suited to a certain client group?



Fran @otfrancesca

a day ago

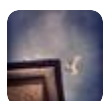
Well I know what the topic of our next CPD session should be at work.. #lotstolearn #otalk



#OTalk @OTalk_

a day ago

RT @sherlynmelody: ahhhh nearly out of time.....#Otalk Question 7: Do you find direct payments are more suited to a certain client group?



Fran @otfrancesca

a day ago

I know what I need to put down as a learning objective on my appraisal form... thanks #otalk



CatherineGreenlaw @c_greenlaw

a day ago

@sherlynmelody The main barrier and facilitator is our creativity which is hard in a busy environment but key to enabling occupations. DPs should be the starting assumption and traditional care the last option #OTalk



Rachel Chilvers @RChilversOT

a day ago

@sherlynmelody @leo @LeonardCheshire Yes, there is support for service users to manage their DP. Sometimes the idea is still too overwhelming, but the main thing is that people are given the choice - DP or commissioned services, whichever works best for them #otalk



YarnPaw @YarnPaw

a day ago

@sherlynmelody We can offer people the choice of self managing their direct payment, or having a managed account that supports with payroll, tax and pension contributions #OTalk



#OTalk @OTalk_

a day ago

Final few minutes of Tonights #otalk hosted by @sherlynmelody I've learned lots and surprised myself with what I already knew! Great hosting @sherlynmelody . Final thoughts of direct payments?



♥ **JM Sherlym GB** ♥ @sherlynmelody

a day ago

@YarnPaw #otalk having a managed account, would that be via an external agent or by your employer?



♥ **JM Sherlym GB** ♥ @sherlynmelody

a day ago

@OTalk_ #otalk phew, I made it. lol, thanks guys! I can't wait to read the transcript!!



Amanda White @ajciliaOT

a day ago

@sherlynmelody @OTalk_ Q6.#otalk from@what I remember, it was finding a carer to employ. And the families understanding of how to utilise it fully,



Chloe Dickson @ChloeDicksonOT

a day ago

@OTalk_ @sherlynmelody Overall I think direct payments is a great service when people know how to access it correctly. #otalk



#OTalk @OTalk_

a day ago

@sherlynmelody Well done!! Great job #otalk



Sarah Pender @louswaiting

a day ago

#OTalk think maybe a mixture of commissioned care plus DP would work really well for some people



#HelloMyNamels Carolyn @CeeCeeOT

a day ago

@OTalk_ @sherlynmelody I think DPs are a great way to apply a strength-based approach to adult social care or CMHT settings #OTalk



Amanda White @ajciliaOT

a day ago

@sherlynmelody @OTalk_ Q7. #otalk good for LD and Physical disabilities



♥️ JM Sherlym GB ♥️ @sherlynmelody

a day ago

@OTalk_ #otalk 🤔 <https://t.co/ZdlVnMT5yO>



#HelloMyNamels Carolyn @CeeCeeOT

a day ago

@OTalk_ @sherlynmelody Nice one @sherlynmelody ! Thanks for hosting, I learned a lot tonight! #OTalk



#OTalk @OTalk_

a day ago

#OTalk 18th Feb 2020 – Homelessness <https://t.co/4Mqd8ofkRM>



♥️ JM Sherlym GB ♥️ @sherlynmelody

a day ago

@CeeCeeOT @OTalk_ #otalk glad you enjoyed! it was good hosting. I would do it again, if @otalk would have me lol



Janet @janetregan3

a day ago

@CeeCeeOT @OTalk_ @sherlynmelody Fab #OTalk tonight. Really looking forward to the transcript. I think direct payments fit really well with the ethos of OT - enabling people to do the things THEY want and need to do!



Fran @otfrancesca

a day ago

RT @RChilversOT: @sherlynmelody Some service users are anxious about the responsibilities of being an employer When the DP is for equipment...



YarnPaw @YarnPaw

a day ago

@sherlynmelody A contracted external agency who acts on behalf of the person to help with particular areas of expertise. Offered at no extra cost to the person using the direct payment, contracted by the local authority #OTalk



OT Sophie @OTSophie

a day ago

Ooops totally forgot its Tuesday 😬 @otfrancesca gonna need u to keep me in the loop !! #otalk



♥ JM Sherlym GB ♥ @sherlynmelody

a day ago

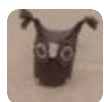
@YarnPaw #otalk do you use a particular agency for this?



#OTalk @OTalk_

a day ago

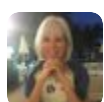
@OTSophie @otfrancesca Set yourself a Weekly reminder alarm on your phone to set off 10 minutes before the chat! #otalk top tip!



YarnPaw @YarnPaw

a day ago

@sherlynmelody Yes, one particular organisation. Am I okay to name them? #OTalk



Rachel Chilvers @RChilversOT

a day ago

Great #otalk tonight on #directpayments hosted by @sherlynmelody - thank you. I need to be thinking about and offering this option more, and support service users to use DPs as more creative and personalised ways to meet their needs.



♥ JM Sherlym GB ♥ @sherlynmelody

a day ago

@YarnPaw #otalk @otalk can we disclose agencies that facilitate DP's?



♥ JM Sherlym GB ♥ @sherlynmelody

a day ago

@RChilversOT #otalk great to hear Rachel, glad its sparked something in you 😊



♥ JM Sherlym GB ♥ @sherlynmelody

a day ago

@ChloeDicksonOT @OTalk_ it was good I enjoyed it, not sure how many people I missed, hopefully too many people had not asked me any questions #otalk 😊



OT Sophie @OTSophie

a day ago

@c_greenlaw @sherlynmelody @otfrancesca @louswaiting Very intriguing, can you give any examples of how? And how this works alongside the care budget they need? #OTalk



OT Sophie @OTSophie

a day ago

@CeeCeeOT @sherlynmelody We do set them up, but only used for POC, would love to feel more confident. #OTalk



OT Sophie @OTSophie

a day ago

@andreaMwill @sherlynmelody Interesting, this fits with care act compliance nicely, how does it work alongside care budget tho? #OTalk



OT Sophie @OTSophie

a day ago

@HelmeNikki @sherlynmelody Yes!! We notice this a lot, worrying in terms of level of skill and often they aren't bound by the same legislation. It puts me off recommending that avenue tbh #OTalk



Sarah Fletcher-Shaw @sarahjoOT

a day ago

RT @OTalk_: #OTalk 18th Feb 2020 – Homelessness
<https://t.co/4Mqd8ofkRM>



♥️ **JM Sherlym GB** ♥️ @sherlynmelody

a day ago

#otalk



OT Sophie @OTSophie

a day ago

@OTalk_ Well this is interesting!! Our organisation would say if the 3rd sector can meet this then it should...#OTalk



♥️ **JM Sherlym GB** ♥️ @sherlynmelody

a day ago

@lauraharold13 @c_greenlaw @OTalk_ #otalk I am not sure how this works, but I guess we can confirm it as the case worker.



♥️ **JM Sherlym GB** ♥️ @sherlynmelody

a day ago

@SusanGriffiths5 #otalk it would appear a DP can be used for anything as long as it meets their care and support needs. Eligibility would be based on the care act as well as local authority discretion??



OT Sophie @OTSophie

a day ago

@OTalk_ Yes, you're talking more about case management I think. In our stat service the care plan part is done by us but we have brokers to do parts too #OTalk



♥️ **JM Sherlym GB** ♥️ @sherlynmelody

a day ago

@ajciliaOT #otalk as a case manager I am expected to promote DP's I have done a one off direct payment for a minor adaptation to a home. its rare I have the opportunity to provide a DP for a package of care as I go in after the package is in place. I guess DP's can be more creative 4 OT's



Ruth Hawley @Ruth_Hawley

a day ago

@WintRebecca - Next week! Looking forward to this 👍 If you're interested in the topic of #homelessness and #OccupationalTherapy please join us in our #OTalk discussion at 8pm on 18th Feb



♥ JM Sherlym GB ♥ @sherlynmelody

a day ago

@HelmeNikki #otalk well if a DP gives people choice and control then I guess your standards are allowed to be high?? if your needs are to be met safely! PA's in the position of caring for/supporting others need to be skilled/trained at least.



OT Sophie @OTSophie

a day ago

@OTalk_ @otfrancesca Youd think, however many years of taking part, I would remember by now!! I went to the cinema which I think confused me! #OTalk



♥ JM Sherlym GB ♥ @sherlynmelody

a day ago

@emmaspellmanOT @HelmeNikki #otalk it would be good to get PA's perspectives in this area! I have seen PA's doing things like lifting people and putting themselves at risk, I think it happens because they feel they owe it to who they are supporting. But I know care agency staff do the same too.



♥ JM Sherlym GB ♥ @sherlynmelody

a day ago

@OTSophie @HelmeNikki #otalk surely they should be bound by the same legislation especially if we are providing the direct payment to meet the needs as quoted in the 'care act'...right??



OT Sophie @OTSophie

a day ago

@sherlynmelody @HelmeNikki Exactly. I guess that's where usual processes for quality issues come in to play #OTalk



♥ JM Sherlym GB ♥ @sherlynmelody

a day ago

@PenelopeFirshma @emmaspellmanOT @HelmeNikki #otalk I think recruitment in this area is a struggle, as well as retention, staff turnover etc, Pay rises would be good, would that be enough to attract the right characters and keep them?



Khalilah R. Johnson, PhD, OTR/L @OccScienceBae

a day ago

@sherlynmelody Thank you! I hope your first #OTalk went well.



♥ JM Sherlym GB ♥ @sherlynmelody

a day ago

@OTSophie @andreaMwill #otalk I think you can offer one off payments, I'm not sure if these amounts vary from one local authority(LA) to the next. but if it is assessed as a need, then I guess it should be provided. LA budgets may impact ones ability to prescribe/offer???



One OT and a Dog @WintRebecca

a day ago

Join us next week if you're interested in #OccupationalTherapy for people who are #Homeless - not long now @Ruth_Hawley



Student Platform OT @SPOTeurope

a day ago

Good info for students to note #otalk



Student Platform OT @SPOTeurope

a day ago

Positives on DP #otalk



Student Platform OT @SPOTeurope

a day ago

❤️ #otalk



Jen Throp @thropj

a day ago

RT @WintRebecca: Join us next week if you're interested in #OccupationalTherapy for people who are #Homeless - not long now @Ruth_Hawley



OT Sophie @OTSophie

a day ago

@sherlynmelody @andreaMwill We do this as a non standard equipment order (still free), wondering at what point u would decide between those. A question I will ask! #OTalk



Bill Wong, OTD, OTR/L @BillWongOT

a day ago

RT @OTalk_: #OTalk 18th Feb 2020 – Homelessness
<https://t.co/4Mqd8ofkRM>



RosieOT @RTH00170813

a day ago

@sherlynmelody Q4. Lack of access and monitoring around training EG. Formal moving and handling training not accessed and lack of opportunity to access such training in local area. Concerns around accountability when such PAs don't have adequate training #OTalk



Amanda White @ajciliaOT

a day ago

It was good to be reminded of #directpayment options to meet needs. Thank you @sherylnmelody and #otalk



Sue Mesa @sue_mesa

a day ago

RT @Ruth_Hawley: @WintRebecca - Next week! Looking forward to this 👍
If you're interested in the topic of #homelessness and #OccupationalTh...



Sue Mesa @sue_mesa

a day ago

@YSJOT students this is very relevant for #MOT005



Gilly- does- Doing @GillyGorry

a day ago

Today for #febYOUary I have a day off!! #otalk #OccupationalTherapy

<https://t.co/puiN3yu6is>



♥️ **JM Sherlym GB** ♥️ @sherlynmelody

a day ago

Yes!! What did YOU do? 🧑



Gemma Scott @gscottOTS

a day ago

RT @OTalk_: #OTalk 18th Feb 2020 – Homelessness

<https://t.co/4Mqd8ofkRM>



JasminOT @JasminLaffy

21 hours ago

@OTalk_ @BillWongOT Someone remind me to set my alarm for this! Very interested in this topic #OTalk



Amy Mitchell @AmyMitchellOT

13 hours ago

RT @WintRebecca: Join us next week if you're interested in

#OccupationalTherapy for people who are #Homeless - not long now

@Ruth_Hawley



Dominican University @DominicanCANews

13 hours ago

Dominican's #OccupationalTherapy program's 100 percent NBCOT pass rate in 2019 surpassed national rate with three-year average of 98 percent. In @usnews #OT ranks No. 17 in "Best Healthcare Jobs" and No. 28 in "Best Jobs" #OTalk #Colleges #CollegeSearch #VisitMarin #ThisIsDUC
<https://t.co/EftXZIRyeC>



OTNorthumbria @OTNorthumbria

11 hours ago

#OT0506



Amy Henkelman @ahenkelnm

11 hours ago

RT @DominicanCANews: Dominican's #OccupationalTherapy program's 100 percent NBCOT pass rate in 2019 surpassed national rate with three-year...



🌟 **Eleanor Cecil** @El_Cecil_

10 hours ago

RT @WintRebecca: Join us next week if you're interested in

#OccupationalTherapy for people who are #Homeless - not long now

@Ruth_Hawley

Showing 1 to 205 of 205 entries



#OTalk content from Twitter.

Free Analytics and Transcripts for #OTalk

100,000 Tweets

Simplur has over 100,000 #OTalk tweets going back to September 2011.

Get unrestricted access to all conversations with **Simplur Signals**.

The Social Media Analytics Platform for Healthcare

Simplur Signals performs tasks and answers questions no generic tool can because it combines the best of both worlds. Hand curation and crowdsourcing ensure unparalleled healthcare subject matter expertise; machine learning and algorithms provide endless scalability.

[Schedule a Demo](#)

[See it in Action](#)

